

ILLUMINATI'S CRYSTAL FITTINGS

APPLICATION

The ILLUMINATI range of crystal fittings are all designed to give a bright sparkling point of light and a pattern of light cast onto the surrounding surfaces. They are made from high quality European real crystal glass. Four crystal fittings are available, each of a different size and shape to give alternative patterns and spreads of light. The crystals are attractive with either a white light source or colour changing model.

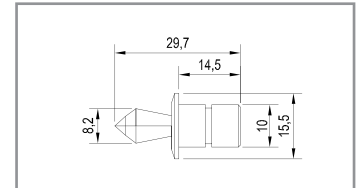
The crystals are designed for use with 1.8mm active diameter glass fibre via a special illuminati Crystal Ferrule connection. The crystal flanges are finished in Chrome or Gold colours as standard. Other finishes are available at extra cost.

Accessory tubes in three lengths are available to allow easy mounting through single or double skinned substrates. These are one diameter to fit all crystals.

SPECIFICATIONS

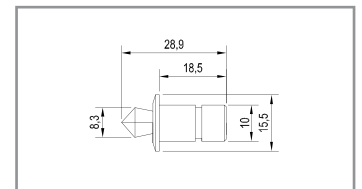
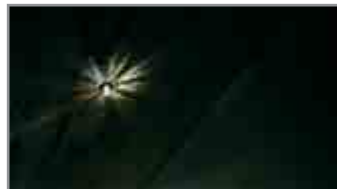
CR1

Flange Diameter = 15.5mm
 Crystal Diameter = 8.2mm
 Overall Length = 29.7mm
 Recess depth = 14.5mm
 Finishes: Chrome; Gold; Special
 All dimensions are approximate and do not include ferrule or gland.



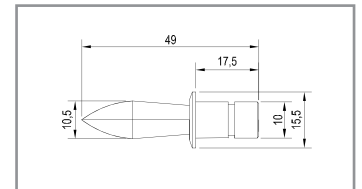
CR2

Flange Diameter = 15.5mm
 Crystal Diameter = 8.3mm
 Overall Length = 28.9mm
 Recess depth = 18.5mm
 Finishes: Chrome; Gold; Special
 All dimensions are approximate and do not include ferrule or gland.



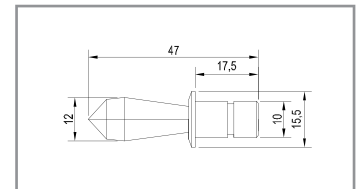
CR3

Flange Diameter = 15.5mm
 Crystal Diameter = 10.5mm
 Overall Length = 49.0mm
 Recess depth = 17.5mm
 Finishes: Chrome; Gold; Special
 All dimensions are approximate and do not include ferrule or gland.



CR4

Flange Diameter = 15.5mm
 Crystal Diameter = 12.0mm
 Overall Length = 47.0mm
 Recess depth = 17.5mm
 Finishes: Chrome; Gold; Special
 All dimensions are approximate and do not include ferrule or gland.



ACCESSORY TUBES

ATCR25 = 25mm long
ATCR80 = 80mm long
ATCR135 = 135mm long
 All with 15.3mm x 0.9mm flange in translucent plastic with internal and external ribbed finish to grip hole and crystal. Drill 12mm hole and insert tube from below. Pass fibre from above through tube and insert into crystal. Push crystal into tube.



Specifier's Reference

Project

Type

Model No.

Comments or Special Instructions